



PENTECOST
June 8, 2025

Preaching
Phil Yoder

Worship Leader
Rachel Skilliter

Pianist/Organist
LuAnn Stuckey

Gathering

Music calls us to worship

Welcome and announcements

Prelude Come Holy Ghost, Lord and God F.W. Zachau

Invocation

*Opening Hymn Holy Spirit Come with Power VT 57

*Responsive Reading – selections from Psalm 104, Acts 2 and John 14
One: O Lord, your works are wonderful! The earth is full of your handiwork.
When you open your hand, we are filled with good things. When you take
away our breath, we return to dust. Put your Spirit within us, O God, and
renew us as your people. In rushing wind and cleansing fire,

Many: God’s Spirit lead us here.

One: In courage found and faith renewed,

Many: God’s Spirit fills our hearts with longing.

One: In visions seen and dreams made real,

Many: God’s Spirit takes away our fear.

One: In rushing wind and cleansing fire ...

All: God’s Spirit sends us to share Christ’s love.

Telling God’s Story

*Hymn New Earth, Heavens New VT 377

Welcoming New Members VT 959-961

Conversation with Children Phil Yoder/New Members
Jesus Loves Me VT 516

Child Dedication
Parents
Responsive Reading VT 970

Sutton Hilty
Emily & Cory Hilty

*Hymn Child of Blessing, Child of Promise VT 508

Community Prayer Carrie Mast
The Lord’s Prayer James W. Bixel
back cover of HWB

Poem What is God Like?

Scripture Acts 2:1-21 Deron Martin

Message Finding New Language

Living God’s Story

*Hymn of Response Holy Spirit, Come to Us VT 58
Sing 4 times: 1 - All, unison 2 - All, SA
3 - All, SAT 4 - All, SATB

Offering Invitation
Offertory In Thee Alone, O Christ J. Pachelbel
Dedication Prayer

Sending

*Hymn of Sending The Lord Bless You and Keep You VT 846

*Benediction

*Postlude Come down, O Love divine R. V. Williams

*Please rise in body or in spirit – VT: Voices Together (Purple Bound Book)
🌿: Anabaptist Heritage Hymn

Parents of young children: God put the wiggle in children, so no need to suppress those wiggles.
Sitting closer to the front makes it easier for your little ones to engage.
Also, children learn their behavior by mimicking you. Sing the hymns, pray, and voice the responses.
Feel free to leave the sanctuary with your child, but you’re welcome to come back.
As Jesus said, “Let the children come to me.”

Lead Pastor Phil Yoder | 717.869.7624 | phil@fmcbluffton.org
Associate Pastor Carrie Mast | 419.230.1568 | carrie@fmcbluffton.org
Communication Coordinator Trusty Schumacher | 419.358.5766 | fmc@fmcbluffton.org
Technology/Interim Worship Coordinator Ray Raeburn | 419.230.2769 | ray@fmcbluffton.org
Custodians Zack Crawford, Ethan Blount, Ollie Combs, Calvin Derstine

Office Hours: Monday – Friday 9 a.m. – 4 p.m.
Phil’s day off – Friday Carrie’s day off – Thursday

ENJOY YOUR SUMMER
IN A WHILE GROCERIES
TAKING A SUMMER BREAK
SEE YOU IN THE FALL

Nursery Workers Today SS: NO NURSERY STAFFING
Worship: —
Nursery Volunteers Take Week Off
Worship: —
Nursery sign-up here: <http://fmcbluffton.org/nursery-volunteers>



Last Sunday – 6/1/2025		This Sunday – 6/8/2025	
Attendance last Sunday:	110	Video:	Ray Raeburn
Reported Volunteer hours:	47	Sound:	Jonah Sheets
Online views:	Live: 23 Recorded: 18	Chancel:	New Members
	Total Viewing Hrs: 27		

Leadership Circle

Moderator	Laurel Neufeld Weaver
Moderator-Elect	Jonathan Spelman
Stewardship Ministry Circle Leader	Kevin Nickel
Connecting Ministry Circle Leader	Ken Shenk
Christian Formation Circle Leader	Shelby Cluts
Deacon	Victoria Woods-Yee
Deacon	Kathy Dickson
Deacon	Isaac Schumacher
Treasurer	Monica Harnish
Recorder	Carrie Phillips

No checks or cash in your pocket?
Consider online giving.

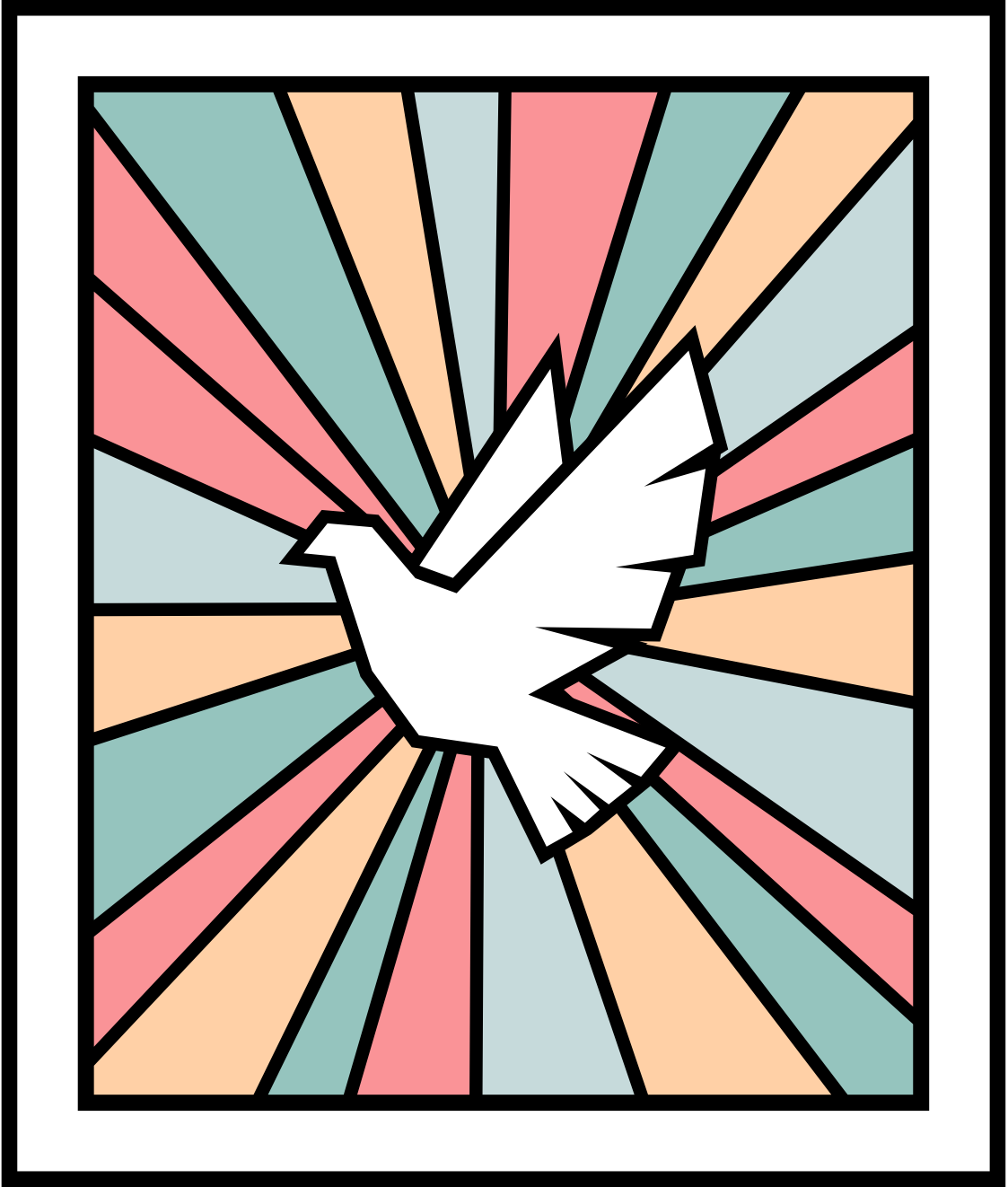


First Mennonite Church is affiliated with the Central District Conference of Mennonite Church USA. The Mennonites are named after Menno Simons, one of our early church leaders, and are rooted historically in the “Anabaptist” movement, which began in 1525, with origins in Switzerland, Germany, and the Netherlands now reaching around the world. Some primary Anabaptist convictions then and now are following Jesus Christ in service to others, rejection of violence and war, and joyful community life.



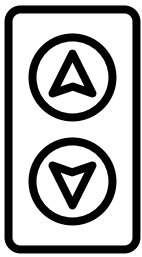
FIRST MENNONITE CHURCH

JUNE 8, 2025

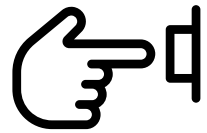
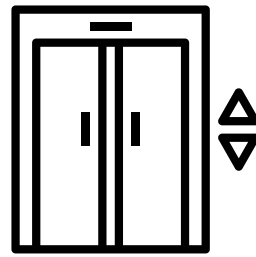




SCHUMACHER HOMESTEAD 8350 Bixel Rd.



Ministry Minute!



Do you like pushing buttons?? How about helping people up the stairs?? Then the Elevator Ministry is looking for you! The ministry is extending an invitation to anyone interested in joining their team operate the elevators on Sunday mornings before and after worship, as well as special events and funerals. If you have any questions about expectations, contact **Heidrun Awad at 419.358.1390 or the church office at 419.358.5766 or fmce@mcbluffton.org.**



June 14

John & Julie Mackey



8 - Kaye Phillips
10 - Jonah Hilty
12 - Marie Dyck
13 - Judy Diller
Cameron Shadbolt
Denny Sheidler
14 - Jenny Moser

In response to God's unconditional love for all people, we joyfully and unconditionally welcome you to join us on our journey of faith in Jesus Christ. We are committed to breaking down dividing walls and building community where all are loved and accepted. We believe in active inclusion and invite each one to participate in the life and ministry of our congregation.



Today, Sunday, June 8, 2025

Coffee Time, 9 a.m.

Drawing Near Elective Sunday School for youth & adults,
9:15 a.m. Assembly Room

Worship: Pastor Phil Yoder preaching, 10:30 a.m. Sanctuary
Sojourners SS potluck, noon Assembly room

This Week

Monday, June 9

Staff meeting, 9:30 a.m. Parlor
Tutoring, 4 p.m. Assembly room
Poetry Group, 5 p.m. Parlor

Tuesday, June 10

Morning prayers, 7 a.m. Sanctuary
Tutoring, 8:45 a.m. Assembly room
Gifts Discernment, 7 p.m. Parlor

Next Sunday, June 15

Worship: Pastor Carrie Mast preaching
Lectionary: Proverbs 8:1-4, 22-31;
Psalm 8; Romans 5:1-5; John 16:12-15



Welcome to our worship service today.

Visitors are invited to sign one of our guest sheets located at the entrances to the sanctuary. Wireless hearing aids are available. Worship bags for children can be found hanging on wooden pegs at each sanctuary entrance. Child care is available during Sunday School and worship for young children in the nursery located in the basement.